



# National Referee Course

## Preparing for National Assessment

EVERYONE PLAYS®

BALANCED TEAMS

OPEN REGISTRATION

POSITIVE COACHING

GOOD SPORTSMANSHIP

PLAYER DEVELOPMENT



# Preparing for National Assessment

*It's about **Match Management***

*It's about **Player Management***

*It's about **Professionalism***

Your AYSO National Assessor will apply [National Assessment Criteria](#)  
to your **19U** matches

# The Success Path to National Assessments

Find and work games with mentor(s)

Are you physically fit?

Do you have upper division game experience?

Do you know the Laws of the Game? Practical Guidelines for Match Officials? Guide to Procedures?

Do you think you are ready?

Do you know you are ready?

# Your National Assessor

Is human

Wants you to succeed – see them as your Coach

Is giving his/her time to you

Should communicate with you

Will assess you on the game you're in

May view your work differently from others

# Communicate with Your Assessor

Pregame from a card?

Procedures?

Non-standard signals?

Hat / sunglasses?

Local rules?



# Preparing to Be Assessed

Read and understand your Section policies on National Referee Upgrades

Arrange your own team if possible

Work matches together – practice self-analysis

Request service assessments

Coordinate uniform color / sleeve length

Coordinate arrival time if possible

Have polished shoes & all equipment

First game of the day

Do all the administrative things right

Allow time for debrief - 2 hours

# Section 1 National Assessment Policy

Candidates should complete the National Referee course, written examination, and physical fitness test prior starting the assessment process. This significantly improves the assessment experience.

Candidates should coordinate the assessment match with their ADRA ***at least three weeks*** in advance.

National Referee Candidates must:

- ✓ Have a minimum of one year experience (time in grade) as an Advanced Referee before assessments for upgrade will be authorized
- ✓ Request assessments when ready through his/her Area Director of Referee Assessment
- ✓ Have passed the written examination and the physical fitness test and have completed all three assessments required for this upgrade within three years (36 months) prior to the date he/she submits the completed upgrade application

# The Officiating Team

## Pre-Game

- Does the pre-game cover everything for this game?
- Rules of Competition
- Non-standard signals?
- Confrontation plan?

***Who's got a great pre-game?***



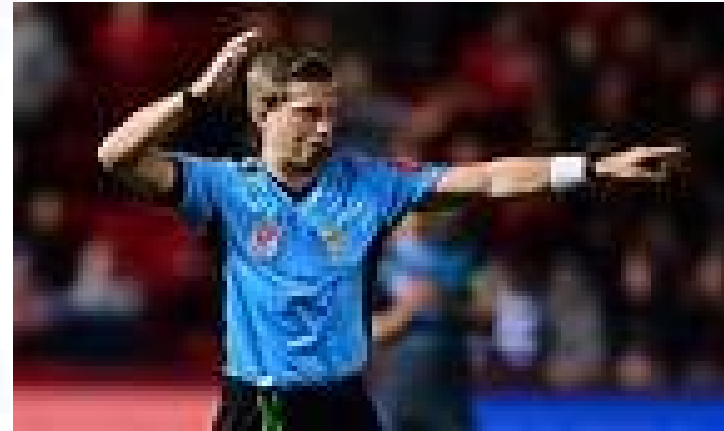
# The Officiating Team

## Pre-Game

- Does the pre-game cover everything for this game?
- Rules of Competition?
- Non-standard signals?
- Confrontation plan?

## Execution

- Enter and leave the field as a team
- Start the match on time
- Communicate
- Support each other
- End on time



# The Officiating Team

## Fouls called by the Assistant Referee

- Did the referee see it?
- Would the referee call it?
- Is it trifling?
- Should advantage be considered?
- Will it matter?

## Execution

- Appropriate signal?
- In-Direct Free Kick?
- Penalty Kick?
- Caution?
- Send Off?



# The Officiating Team

## Signaling

- Order of signaling
  - Quadrants
- Eye contact
- Subtleties

## Record Keeping

- Trail, Lead, Center
- Mass confrontation

## Non-Standard Signals

- Examples
- Cover in Pre-game



# Recommendation for Upgrade

Know the Laws of the Game.....cold

Know the proper mechanics.....cold

Work as a Team

- Perform as you discussed in the pregame
- Demonstrate proper substitution procedures
- Understand and apply the Referee's game
- Eye contact between the referee and the assistant referee
- ARs: mirror signals

# Recommendation for Upgrade: AR

*DO NOT ASSUME YOUR ASSESSMENT AS  
ASSISTANT REFEREE  
IS A “GIMME”*

# Recommendation for Upgrade: AR

Concentrate the entire game

- Second to last opponent for offside
- Follow the ball all the way to the goal line

Fitness

- Side step when it makes sense
- Get in position quickly from a goalkeeper punt
- Keep up with play (breakaways)
- Manage substitutions

# Recommendation for Upgrade

## Match Management

- Time management
- Touchline management
- Talk to players if appropriate

## Player management

- Set the wall
- Spot the ball for restarts if needed
- Fouls & misconduct (understand the angles)
- Behind the referee's back & off the ball
- Be attentive & responsive to player injuries

# Recommendation for Upgrade

## Positioning and Anticipation

- Restarts
- Dynamic play
- Penalty area
- Breakaways

## No invisible lines

- Where is the action?
- Angle of view...then proximity





# Recommendation for Upgrade

## Reading the game / making adjustments

- Foul recognition (non-calls, careless and reckless challenges, SFP)
- Team tactics
- Transitions / passing lanes
- Dealing with misconduct
- Advantage

## Match control

- Law knowledge
- Correct restarts / location of ball

# Recommendation for Upgrade

## Match Awareness

- Look at and Acknowledge your AR's
- Speed / Urgency
- Free kick management
- Off ball fouls

## Demonstrate your Fitness for the Whole Match

## Courage

- Make the right call
- Give the 2nd caution

# It Will be Noted...

Did you research the teams?

When you identify the skilled players?

When you identify the problem players?

How you manage the players?

Did you insert yourself into their game?

How did you deal with the coaches? Spectators?

Are you a thinking Referee?

Did you make adjustments as the game progressed?

# Other Stuff

Don't argue with the assessor

May I officiate a girls game for one of my National assessments?

Do I need to show cards to pass my assessment?

What is an "assessable match"?

May I officiate in another Section for one of my National assessments?

Resources: [ayso1ref.com/](http://ayso1ref.com/) AYSO Section 1 National Referee Assessment and Certification Policy and Procedures

[aysosection10.org/](http://aysosection10.org/) AYSO Section 10 National Referee Certification Process

[ayso-section11.org/Section11](http://ayso-section11.org/Section11) National Referee Assessment Guidelines

# Your Section Staff

## Section Referee Administrators:

- Section 1      Rick Roberts      [ayso1sra@gmail.com](mailto:ayso1sra@gmail.com)
- Section 10     Linda Kovar      [dsrtsocr@gmail.com](mailto:dsrtsocr@gmail.com)
- Section 11     Ben Murray      [sra@aysosection11.com](mailto:sra@aysosection11.com)

## Section Directors of Referee Assessment:

- Section 1      Ed Williams      [ayso1sdra@gmail.com](mailto:ayso1sdra@gmail.com)
- Section 10     Bob Hurwich     [hurwich@ieee.org](mailto:hurwich@ieee.org)
- Section 11     Jim Cowart      [srda@aysosection11.com](mailto:srda@aysosection11.com)

# The National Referee

*Uses Superior Judgement  
to Avoid Situations  
that Require  
Your Superior Skills*

# Preparation for National Assessment

Any Questions?

Good Luck!

Remember: Smile & Relax!

